



PENNSYLVANIA ACADEMY
OF THE FINE ARTS

CONTINUING EDUCATION PROGRAMS

SPRING 2012



MASTER CLASS WITH ALEX KANEVSKY MARCH 17 & 18 SEE PAGE 3

PAFA CONTINUING EDUCATION

A COMMUNITY OF DEDICATED ARTISTS OF ALL AGES AND SKILL LEVELS



Join a PAFA Continuing Education (CE) class and gain from our two-century-old tradition of teaching excellence in the fine arts. Whether you're venturing into art for the first time, returning after a long absence, preparing a portfolio or mastering your craft, PAFA CE has something for you.

BENEFITS OF PAFA CE

- A stellar faculty of practicing, professional artists
- Small-sized classes for plenty of individual attention
- Access to the PAFA campus including the breathtaking Cast Hall and PAFA Library
- 20% discount on all purchases at PAFA Art Supply
- Free admission to the PAFA Museum, featuring a renowned permanent collection of American art and special exhibitions
- Frequent Student Discount - take five classes or workshops and receive your sixth for free!
See page 25 for details.

Be sure to submit your artwork to the Continuing Education Programs Annual Juried Student Exhibition coming this April! Students enrolled in CE classes during the Summer 2011, Fall 2011 or Spring 2012 semesters are eligible to enter. Watch for a detailed prospectus available on our website in February: pafa.edu/CE.

CE COMMUNITY SCHOLARSHIP - NEW!

PAFA Continuing Education is pleased to present the "CE Community Scholarship" to assist students who demonstrate dedication to their art. See page 25 for more details.

The CE Community Scholarship is made possible in part by generous support from the Dry Family Foundation. For information about making a gift to support the CE Community Scholarship, please contact the Development Department at 215-972-2077.

WE'RE HERE TO HELP!

Please call 215-972-7632 or write continuinged@pafa.edu for more information or assistance in course selection.

A gift certificate for a course or workshop makes a great gift! Call 215-972-7632 for more details.

CONTINUING EDUCATION PROGRAMS

128 North Broad Street, Philadelphia, PA 19102
t 215-972-7632 f 215-569-0153
e continuinged@pafa.edu www.pafa.edu/CE

MASTER CLASSES

IN 609E MASTER CLASS WITH ALEX KANEVSKY For Intermediate/Advanced Painters

Saturday and Sunday, March 17 & 18
9 a.m. - 5 p.m.

Tuition: \$950

Join contemporary realist master Alex Kanevsky on a two-day journey of perceptual figure painting. Work from the life model, with insights from the artist to break from the traditional assumptions of observational painting. Explore painting as a form of dialogue, aligning the creative process with one's personal experiences to create work that is dynamic and unexpected. Learn to use the imprecisions and "mistakes" that occur in the development of a painting toward discovering a new form of reality. As Kanevsky puts it, "Painting is not something I do to a canvas. It is a form of conversation, that can have unexpected turns, sudden discoveries and hidden subtext and periods of silence. All this is what makes painting endlessly fascinating."

Alex Kanevsky was born in Russia and studied mathematics at Vilnius University in Lithuania before coming to the United States. After his arrival to Philadelphia in 1983 he worked as a Yellow Pages artist, Russian translator and an illustrator for a Psychiatric Nursing Magazine. After attending PAFA (1989-93) and winning a Pew Fellowship (1997) he devoted himself to painting full time. Alex Kanevsky lives and works in Philadelphia. He has exhibited his work in numerous shows in the United States and abroad.



Alex Kanevsky, *J.F.H. with Four Doors*, 2011, oil on wood, 36 x 59 inches
On the cover: *J.F.H. Large Portrait*, 2010, oil on wood, 48 x 48 inches



Paul DuSold, *Olivia*, oil on canvas, 26 x 22 inches

PT 602EW PORTRAIT PAINTING FUNDAMENTALS Paul DuSold

Saturday and Sunday, February 25 & 26
9 a.m. - 5 p.m.

Tuition: \$495

Gain confidence in approaching portraiture with acclaimed portrait artist Paul DuSold. This workshop will be conducted in a step-by-step manner via lecture, demonstration and hands-on practice, with focus on understanding light and color in portraiture. The mornings will be dedicated to drawing in charcoal, pencil and conté on toned paper to define directional light, texture and the illusion of space through line quality and shading. Students will paint in the afternoon, focusing on seeing color in terms of warm and cool. Designed for students of all levels.

Paul DuSold is a PAFA graduate who has completed numerous commissioned portraits both institutional and private. He lives and works in Philadelphia and his work can be seen at pauldusold.com.



Ken Kewley, *Bather Arranging Her Hair*
collage on paper, 7 3/4 x 5 3/4 inches

IN 602EW PAINTING AND COLLAGE WORKSHOP WITH KEN KEWLEY
For Intermediate/Advanced Painters

Saturday and Sunday, April 14 & 15
9 a.m. - 5 p.m.
Tuition: \$595

Push the boundaries of representation and abstraction in your artwork with painter Ken Kewley. Working from the life model, explore color, texture and personal expression through colorful paper collage and painted studies. Use collage and painting in combination or as a means of informing each other, learning to see and incorporate abstract elements in recognizable subject matter. Rejuvenate your creative process with an infusion of vibrant color and new ways of seeing in this dynamic, hands-on workshop.

Ken Kewley received a BA from the College of Creative Studies at the University of California, Santa Barbara. While living in New York City, he was a night watchman at the Metropolitan Museum of Art, and considers this a major part of his formal education. Kewley has exhibited his work nationally and internationally, most recently at Lori Bookstein Fine Art, New York, and the Rothschild Gallery in Tel Aviv. He has taught and lectured at the Jerusalem Studio School, National Academy of Design, and Pratt Institute. His work is included in many private and public collections and has been reviewed in The New York Times, The New York Sun, ARTnews and The New York Observer.

Plus! FREE Slide Lecture:
My Painting Life - An Exploration of Abstraction and Figuration
Friday, April 13, 6 - 7:30 p.m.
Hamilton Auditorium, Historic Landmark Building
Open to the Public!

IN 609E MASTER CLASS WITH STUART SHILS:
THE PERCEPTUAL MOMENT

For Intermediate/Advanced Painters

Friday, Saturday and Sunday, June 1, 2 & 3
9 a.m. - 5 p.m.

Tuition: \$950

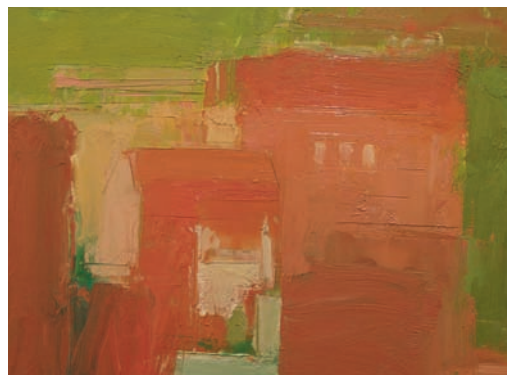
Immerse yourself in a three-day intensive with critically acclaimed painter, Stuart Shils. Painting outdoors in the city, the class will examine crucial aspects of the direct visual encounter, emphasizing discriminating observation, perceptual hierarchy and a deeper understanding of color and drawing. The class will begin with a slideshow of master works from past and present to illuminate different artists' approaches to active looking, emphasizing the relationship of perception and composition through the graphic languages of painting, drawing and photography. Additional focus will be placed on the practice of drawing.

Stuart Shils, a PAFA alumnus and faculty member, has painted the landscape for over 25 years and his work has been presented in solo shows in Philadelphia, New York, Tel Aviv, Boston, San Francisco and Cork, Ireland. Critical review and commentary has appeared in The New York Times, The Philadelphia Inquirer, Art in America, The New Yorker, American Artist and numerous other publications. Grants and awards include an Independence Foundation Fellowship in the Arts, a Pollock-Krasner Foundation grant and an Academy Award in Art from the American Academy of Arts and Letters. An annual visiting critic at the Vermont Studio Center, Shils teaches painting across the country and abroad.

Plus! FREE Slide Lecture:
The Structure of the Perceptual Moment and the Language of Painted Space

Thursday, May 31, 6 - 7:30 p.m.
Open to the public!

Stuart Shils, *Tuscan Houses*, oil on canvas,
courtesy Steven Harvey Fine Art Projects, New York



Chester Springs Studio

Located in beautiful Chester County, Historic Yellow Springs is dedicated to preserving and promoting the history and arts of Yellow Springs Village, the location of the PAFA Country School from 1916 to 1952. PAFA is proud to reestablish this historic relationship through courses at Chester Springs Studio, taught by PAFA faculty.

Tuition for multiple-week courses is \$310 non-credit or \$450 for 1.0 undergraduate credit. Weekend workshops are \$195.

PT 714CS PORTRAIT DRAWING AND PAINTING
Jill A. Rupinski

Investigate the structure, proportions and anatomy of the human head through drawings and painted studies. Progress to more complete paintings, addressing color and color mixing, composition, space, texture and likeness. Students may draw, paint or both.

10 weeks, Mondays, January 30 - April 2
6:30 - 9:30 p.m.

Register by: January 23

PT 605CS WINTER LANDSCAPE

Joseph Sweeney

Experience the peace and beauty of the winter landscape by painting on-location, the trademark of winter plein air artists such as Edwin Redfield, and from the comfort of Historic Yellow Springs' facilities. Topics include mixing color to achieve a sense of light, and capturing time of day. Materials and techniques for painting, pastel and drawing will be discussed.

7 weeks, Tuesdays, February 7 - March 20
10 a.m. - 2 p.m.

Register by: January 31

SC 605CS TERRA COTTA FIGURE SCULPTURE

Colleen O'Donnell

Explore the versatility of terra cotta sculpture which requires neither an armature nor casting. Learn various techniques and tools through demonstration and hands-on sculpting from the life model, without an armature. Anatomy, proportion, design, and personal growth will be emphasized, and both representational and abstract approaches to the figure will be addressed.

7 weeks, Thursdays, March 1 - April 12
10 a.m. - 2 p.m.

Register by: February 23



Photo: Joe Sweeney

PT 601CS PAINTING SPACE AND LIGHT: THE STILL LIFE

Frederic Kaplan

The illusion of realism in still-life painting is incomplete without a convincing sense of space and light. Learn to see and translate the effects of light—its color, intensity, directions and focus - into your painting to achieve more authentic and vibrant results.

7 weeks, Fridays, March 2 - April 13
10 a.m. - 2 p.m.

Register by: February 24

PT 604CS WATERCOLOR WORKSHOP

James Toogood

Discover or enrich your skills in watercolor painting through direct observation and your own source material. Learn about watercolor materials and a wide range of watercolor techniques. Topics will include composition, texture, perspective, and creating a feeling of depth, space and light.

Saturday and Sunday, February 25 & 26
9 a.m. - 4 p.m.

Register by: February 17

PT 602CS PORTRAIT PAINTING BASICS

Theodore Xaras

This comprehensive workshop covers all aspects of painting a traditional portrait. Topics include achieving a likeness, modeling light and shade, mixing flesh tones and painting technique. Includes demos, portrait history and tips on painting children's portraits.

Saturday and Sunday, March 24 & 25
9 a.m. - 4 p.m.

Register by: March 16

For more information about Historic Yellow Springs - Chester Springs Studio, including directions and accommodations, visit: yellowsprings.org, email: inquiries@yellowsprings.org, or call: 610-827-7414.

SATURDAY CLASSES

Saturday classes offer teens a valuable opportunity to develop and hone their skills under the guidance of stellar PAFA faculty. Students also receive assistance in preparing a portfolio for art school/college. All levels welcome.

DR 710EP DRAWING AND PAINTING FOR HIGH SCHOOL STUDENTS

Roger Chavez
Room 1023/Samuel M.V. Hamilton Building
Ideal for teens who want to further their drawing and painting skills and develop a strong body of work for their portfolios. Students will work from still life, interior spaces, window views and figure models to learn principles of composition, value, perspective, color mixing and paint handling. Note: This class will have nude models.
10 weeks, February 4 - April 7, 9 a.m. - 12 p.m.
Tuition: \$450 for 1.0 undergraduate credit or non-credit
Register by: January 27

DR 710ES SCULPTURE FOR HIGH SCHOOL STUDENTS

Katie Dillon Low
7th Floor Sculpture Shop/
Samuel M.V. Hamilton Building
Students will explore traditional and contemporary materials and techniques of sculpture, and learn to think critically and creatively about turning abstract ideas into reality. Students will model with clay, carve, and work with found objects and assemblage.
10 weeks, February 4 - April 7, 9 a.m. - 12 p.m.
Tuition: \$450 for 1.0 undergraduate credit or non-credit
Register by: January 27

SUMMER ACADEMY FOR HIGH SCHOOL STUDENTS

July 9 - August 3
The Summer Academy is the definitive program for talented and motivated high school students: a four-week, college level art making experience in the nation's first and premier school of fine art.

- College-level courses in drawing, painting, sculpture and printmaking taught by an exceptional faculty of practicing, professional artists and teachers.
- Day trips to the museums and galleries of Philadelphia, New York and Washington, D.C.
- Special presentations covering the ins-and-outs of applying to art school, portfolio preparation and self-promotion for artists.
- The opportunity to earn four college credits

PAFA ITALY

July 16 - 31
PAFA Italy is a two-week, pre-college summer abroad program designed to challenge young artists to hone their drawing and painting skills amidst a vibrant cultural landscape.

- Explore art making and art history in the birthplace of the Renaissance.
- Draw and paint from the sculpture, monuments and landscapes of antiquity that have inspired centuries of artists
- Benefit from PAFA's traditional yet progressive instruction
- Make new friends that will last a lifetime
- Earn three college credits

For more information on the Summer Academy for High School Students and PAFA Italy, visit pafa.edu/HighSchool.

If you are new to art, taking classes but unsure of your direction, or returning to art after a long absence, the CE Core Curriculum Program is for you. Designed to help you achieve your artistic goals, the program provides a structured curriculum of classes in logical sequence to build your basic skills and the confidence necessary to move forward in any artistic direction.

BENEFITS

- Individually tailored assistance in course selection
- Helpful guidance and feedback on your progress
- A flexible timeframe - complete the requirements at your own pace, with no time limit
- Previously completed courses may be transferable
- A Certificate of Achievement upon completion
- A complementary one-year PAFA Alumni Circle Membership

CURRICULUM

This core curriculum has been designed to give you a solid grounding in drawing, painting, sculpture and printmaking. Complete the program with eight courses, including two electives. Taking additional electives is encouraged to assist you in working towards a focused goal. Courses must be taken for credit to merit a grade and better gauge your progress. For added flexibility, certain workshops may be combined to meet course requirements.

REQUIRED COURSES

- Drawing (2)**
- *Fundamentals of Drawing* or comparable
 - A second level class such as *Cast Drawing*, *Pastel Drawing* or *Life Drawing*
- Painting (2)**
- *Beginning Painting* or *Still Life Painting*
 - A color-oriented course such as *Color: Theory and Practice*

Sculpture (1)


- *The Art of Sculpture* or comparable

Printmaking (1)

- Any printmaking course

Elective Courses (2)

- A more advanced drawing or painting class
- Any second course in sculpture or printmaking

 Look for the icon next to courses that meet the first-level requirements. The Frequent Student Discount applies (see page 25). Please call the Continuing Education office at 215-972-7632 and make an appointment to discuss what the Core Curriculum Program can do for you.

FOR K-12 EDUCATORS PROFESSIONAL DEVELOPMENT CREDIT

PAFA is an Act 48 provider and a registered New Jersey Department of Education Professional Development provider. All PAFA CE courses and workshops are eligible for credit. See page 25 for details.

ADVANCED CURRICULUM FOR EDUCATORS (ACE) PROGRAM - NEW!

Designed to provide educators with an opportunity to advance their personal artwork and refresh their teaching amidst a community of like-minded individuals.

- A minimum of 10 elective CE studio courses for graduate credit
- Courses may be completed at your own pace with no time limit
- Certificate of Achievement upon completion
- Tuition: \$825 per course for 1.5 graduate credits

For more information, visit pafa.edu/CE or call 215-972-7632



COMING THIS SUMMER

THE FIGURATIVE TRADITION AT PAFA

May 21 - 26
An intensive one-week long figure drawing and painting class focusing on fundamental skill and perceptual negotiation, taught by PAFA faculty and Florence Academy alumni Peter van Dyck and Carolyn Pyfrom.

SUMMER ACADEMY FOR TEACHERS

July 23 - 27
Designed to provide K-12 educators the opportunity to renew and refresh their teaching and art within the inspiring environment of the historic and contemporary PAFA Museum and classrooms.

- Open to all levels of experience (unless otherwise noted)
- Feature demonstrations, lectures, studio activity and critique

SCHEDULE*

- 3 hours once a week for 14 weeks
- **No 14-week classes will meet during Spring Break:** Monday, March 5 - Sunday, March 11. Short and Condensed Courses will run through the break.

MONDAY EVENINGS

January 23 - April 30
 Note: No classes on January 16,
 Martin Luther King, Jr. Day
 Register by: January 6

6:30 - 9:30 p.m.

PT 605ES STILL LIFE PAINTING: SMALL FORMAT/QUICK DECISIONS - NEW!

Celia Reisman
 Room 1010/Samuel M.V. Hamilton Building
 Complete one small-format painting each class session to develop ease and fluidity, sharpen visual focus and decisively bring completion to each work. Take advantage of the interesting array of arrangements in the PAFA Still Life Room to explore issues of color, light, space and composition on a variety of painting surfaces. Examples from artists working within a similar format will serve as a source for inspiration and discussion.

DR 619EI PENCIL DRAWING WITH WATERCOLOR AND INK

Hiro Sakaguchi
 Room 461/Samuel M.V. Hamilton Building
 Investigate the dynamic possibilities and subtle intensity of utilizing watercolor and ink in your drawings. Combine the crisp, gestural mark of the pencil with delicate, evocative washes of transparent tone and color to produce vibrant mixed media work in the tradition of Cézanne and Rodin. Students will learn graphite and pen-and-ink drawing techniques as well as watercolor and wash painting methods. Basic drawing experience required.

TUITION*

- \$675 for 1.5 undergraduate credits
- \$465 for non-credit
- Additional lab and materials fees where indicated

FOR K-12 EDUCATORS

- All CE courses are eligible for Act 48 hours and New Jersey Department of Education Professional Development credit (See page 25 for details)

*Unless otherwise indicated

DR 720EK THE ART OF KI: DRAWING AND PAINTING - NEW!

Yasuji Paul Hamanaka
 Room 1023/Samuel M.V. Hamilton Building
 Designed for those with drawing and painting experience who desire to improve their skills and elevate their artistic expression. Learn to recognize ki, or energy, as you work from the human figure with mixed media. Find meaning and impact in the marks you make, and understand the effects of changing light, pressure and media. Achieve spiritual expression through a new understanding of ki, soul, and spirit. Includes demonstration, discussion of master artists' drawings and critique. Students may draw or paint or both.



TUESDAY EVENINGS

January 17 - April 24
 Register by: January 6

6:30 - 9:30 p.m.

SC 605EA TERRA COTTA FIGURE SCULPTURE



Colleen O'Donnell
 7th Floor Sculpture Shop/
 Samuel M.V. Hamilton Building
 Explore the versatility of terra cotta clay sculpture which requires neither an armature nor casting. Learn various techniques and tools through demonstration and hands-on sculpting from the life model. Anatomy, proportion, design, and personal growth will be emphasized, and both representational and abstract approaches to the figure will be addressed.

DR 605E LIFE DRAWING

Neil di Sabato
 Room 610/Samuel M.V. Hamilton Building
 Learn to draw the human figure in a more informed manner by developing an understanding of its anatomical and planar/muscular structure. Work in diverse media and sizes to realize a more personal method of drawing the figure. Class work progresses from quick poses to prolonged studies and mark-oriented, life-size drawings.

PT 607EA PAINTING FROM THE CAST COLLECTION - NEW!

Gilbert Lewis
 Studios 2 & 3/Historic Landmark Building
 Working from casts of antique sculpture is a traditional means of art instruction and excellent preparation for drawing and painting the human form. Work from PAFA's collection of rare casts of Greek, Roman, and Renaissance sculpture to learn the materials and techniques of painting. Work in a limited palette to achieve a broad range of tones, and progress from gesture studies to finished paintings. Instruction will focus on achieving illusionistic representation while capturing the underlying harmony of the ideal human form.

WEDNESDAY EVENINGS

January 18 - April 25
 Register by: January 6

6:30 - 9:30 p.m.

SC 602E STONE CARVING

Steve Nocella
 7th Floor Sculpture Shop/
 Samuel M.V. Hamilton Building
 Explore the possibilities of stone carving using traditional and nontraditional methods. All processes from rough carving to polishing will be covered, and various tools and techniques will be demonstrated.

PT 603E2 COLOR, LIGHT, AND COMPOSITION - NEW!

Joshua Marsh
 Room 1023/Samuel M.V. Hamilton Building
 This painting course is an in-depth study of the nature and compositional significance of color and light. Students will hone their skills in analyzing, mixing, and painting perceived color from observation, in order to construct compositions with a greater degree of invention. Students will paint primarily from still life, and in part from the human figure. Slide talks on works by artists throughout history will augment painting practice. Advanced and beginner students welcome.

PR 602E LITHOGRAPHY

Ronald Wyffels
 6th Floor Print Shop/Samuel M.V. Hamilton Building
 Learn basic and advanced techniques in drawing, etching and printing on stones and aluminum plates. Design your own images as you experiment with a variety of lithographic drawing materials. View original lithographs from the instructor's and Printmaking Department's collections. Lab fee of \$20.

IN 601E THE MATERIALS AND TECHNIQUES OF PAINTING



Anthony Ciambella
 Room 1021/Samuel M.V. Hamilton Building
 An essential course for painters of all levels. Stretch canvas, prepare wood panels, make gesso, grind pigments and frame your own paintings. Discover how to properly use mediums, solvents, varnishes and brushes and learn how to make informed choices when purchasing art supplies. Learn underpainting and glazing techniques in oil, acrylic and tempera while painting from multiple subjects including still life, the human figure and your own source material.

continued on page 10

WEDNESDAY EVENINGS *continued***SC 625EI THE ART OF SCULPTURE**

Elizabeth Hill

7th Floor Sculpture Shop/

Samuel M.V. Hamilton Building

Experience sculpture as "the language of form."

Explore the expressive possibilities of clay-modeling, plaster casting, carving in stone or wood, and utilizing found objects. Learn the tools and techniques for creating from direct observation as well as one's imagination. Beginners and experienced students alike are welcome. Lab fee of \$60.



THURSDAY EVENINGS

January 19 - April 26

Register by: January 6

6:30 - 9:30 p.m.**DR 600EB DRAWING FUNDAMENTALS**

Phyllis Laver

Room 461/Samuel M.V. Hamilton Building

If you've never drawn before, or your skills are a little rusty, then this class is for you. Drawing is a valuable way of recording your thoughts and impressions. Acquire grounding in the basics so you can draw what you see with confidence. Study the still life, cityscape, human figure, and other subjects to master the drawing elements - shape, contour line, composition, light and shadow, texture and perspective.

**PR 604EP MONOPRINT/ETCHING**

Tony Rosati

6th Floor Print Shop/Samuel M.V. Hamilton Building

Learn to create unique etchings called monoprints by incorporating painterly inking methods with basic intaglio techniques. Work in black-and-white and color using traditional intaglio techniques, including drypoint, etched line, open bite, aquatint, hard ground, simple collagraph methods, and soft ground, producing both linear and tonal effects. Lab fee of \$20.

**SC 711E FOUNDRY: AN INTRODUCTION**

Pavel Efremoff

7th Floor Sculpture Shop/

Samuel M.V. Hamilton Building

This course will cover all aspects of the foundry process. This valuable opportunity to create a finished bronze sculpture is appropriate for the novice as well as those with casting experience. Demonstrations and hands-on instruction will be given in wax modeling and casting, ceramic shell techniques, bronze pouring, metal chasing, TIG welding and patination. Students are encouraged to bring a sculpture or object to cast. Lab fee of \$60.

PT 602E BEGINNING PORTRAIT PAINTING - NEW!

Robert Waddington

Room 461/Samuel M.V. Hamilton Building

Ever wanted to paint portraits, but found it too difficult? Create convincing portraits in oils through a step-by-step approach to achieving a likeness, mixing flesh tones and applying paint. Each operation will be explained in clear and concise terms along with continuous demonstration. Facial structure and anatomy of the features will be made easy to understand, utilizing models, master drawings and plaster casts. This offers a strong foundation for further portraiture and all painting pursuits.

- Open to all levels of experience (unless otherwise noted)
- Feature demonstrations, lectures, studio activity and critique

SCHEDULE*

- 3 hours once a week for 14 weeks
- **No 14-week classes will meet during Spring Break:** Monday, March 5 - Sunday, March 11. Short and Condensed Courses will run through the break.

TUITION*

- \$675 for 1.5 undergraduate credits
- \$465 for non-credit
- Additional lab and materials fees where indicated

FOR K-12 EDUCATORS

- All CE courses are eligible for Act 48 hours and New Jersey Department of Education Professional Development credit (See page 25 for details)

*Unless otherwise indicated

MONDAYS

January 23 - April 30

Note: No classes on January 16,

Martin Luther King, Jr. Day

Register by: January 6

9 a.m. - 12 p.m.**PT 618E INTERMEDIATE FIGURE PAINTING**

Carolyn Pyfrom

Studio 1/Historic Landmark Building

A prolonged and in-depth study of the figure, this course is a continuation of the basic formal principles of representational figure painting. Working from the life model, students will complete two figure paintings, each seven sessions in duration. Students will focus on accurate observation of tones to create a sense of light, atmosphere and form. Suitable for students with some figure painting experience.

PR 620E SCREENPRINTING - NEW!

Lisa Hamilton

6th Floor Print Shop/Samuel M.V. Hamilton

Screenprinting is a versatile and quick form of printing on paper, textiles, wood, glass, ceramics and more. All aspects of the process will be covered including screen preparation, image development, mixing and modifying ink, printing techniques and reclaiming screens. Students will have the opportunity to explore hand-drawn, digital and photo processes and will be encouraged to experiment. Lab fee of \$20.

12:30 - 3:30 p.m.**PT 616ES OIL PAINTING: STILL-LIFE**

Gilbert Lewis

Room 1010/Samuel M.V. Hamilton Building

Approaches to painting by layering or glazing oil colors will be demonstrated using a variety of engaging still-life arrangements as subject matter. The creative uses of this time-honored method will be discussed and demonstrated with emphasis on contemporary relevance as well as historical reference.

IN 602ES COLOR THEORY AND PRACTICE - NEW!

SHORT COURSE

Clarissa Shanahan Schrimmer

Room 610/Samuel M.V. Hamilton Building

This lecture and studio painting course introduces basic color theory. Explore color relationships based on positions and principles of the color wheel and learn how to apply them toward compositional effects. Students will produce color studies and still life paintings to explore grisaille, earth and prismatic palettes to bring theory into practice. Includes practical information on different paint manufacturers and methods of pigmentation. 10 weeks, January 30 - April 2

12:30 - 3:30 p.m.

Tuition: \$450 for 1.0 credit or \$390 non-credit

Register by: January 20



TUESDAYS

January 17 - April 24
Register by: January 6

9 a.m. - 12 p.m.

PT 600E LIFE PAINTING AND DRAWING

Doug Martenson

Room 1021/Samuel M.V. Hamilton Building
Explore contemporary and traditional realism in drawing and oil painting. Learn fundamental elements of figure drawing including anatomy, quality of line, tone, composition, design, proportion and space. Students will work from models, starting with short poses and continuing to extended poses to develop finished paintings. For beginners and advanced students.

PT 601ET TROMPE L'OEIL STILL LIFE - NEW!

Frederic Kaplan

Room 1010/Samuel M.V. Hamilton Building
Learn to paint intimate still-life portraits of compelling realism, simulating a variety of materials and textures, as well as conveying a sense of depth and light. A number of painting techniques will be investigated, including glazing and scumbling, along with skillful color mixing and application of chiaroscuro.

12:30 - 3:30 p.m.

PT 714E INTERMEDIATE PORTRAIT DRAWING AND PAINTING - NEW!

Neil di Sabato

Room 610/Samuel M.V. Hamilton Building
This course allows for the advancement of portraiture, encompassing the accompanying environment and pictorial design. Focus will be on the impact of color and design on content. Suitable for students with prior portrait painting/drawing experience and a grasp of the human head's basic structure and features. Also ideal for those who prefer to work from multi-week poses.

WEDNESDAYS

January 18 - April 25
Register by: January 6

9 a.m. - 12 p.m.

PT 701E THE FIGURE AS A POINT OF DEPARTURE

Kassem Amoudi

Rooms 465/Samuel M.V. Hamilton Building
Draw and paint the human figure in a looser, more expressionistic manner. Refine your painting skills to create a lively surface through the use of directional brushwork and harmonic color. Establish pictorial unity through visual metaphor and multiple focal points, and explore the contrast between "active" and "quiet" areas. Painting and drawing experience recommended.

12:30 - 3:30 p.m.

PT 615E PAINTING FROM THE MASTERS

Jill A. Rupinski

Studio 4 and Galleries/Historic Landmark Building
Whether you are a beginner or advanced student, painting from the work of a master is a timeless practice for the training of an artist, advancing your understanding of technique and enhancing personal development. Explore the rich technical elements of master works in this hands-on painting class, including color systems and compositional foundations through direct observation and analysis of original paintings. The PAFA Museum will serve as the studio venue for this course with ample lecture and demonstration on the preparation of materials and painting technique.

PT 703EL PAINTING OVER THE LINE

Kassem Amoudi

Room 1023/Samuel M.V. Hamilton Building
Advance beyond confined lines and hard edges to a more liberated way of painting. Paint from observation and imagination to find your own visual language. Work more intuitively and view unforeseen occurrences as opportunities to discover new possibilities. Explore new processes in brushwork and color layering, as well as Post-Impressionist, Abstract, and Abstract Expressionist styles. Examples from contemporary and modern art will broaden your understanding of innovative painting. Painting experience recommended.



SC 615E ÉCORCHÉ

Colleen O'Donnell

Studio 5/Historic Landmark Building
Écorché ("the flayed figure") is the three-dimensional study of the human form done by developing the bone and muscle structures beneath the skin. This method of study dates back to the Renaissance and is a staple of classical art training today. Students will work in clay on an armature from the skeleton and nude model for the accurate development of the body's proportions and the detailed study of its parts. This an excellent way for draftspersons and sculptors alike to gain a more concrete understanding of human anatomy.

PT 605EP THE PENNSYLVANIA LANDSCAPE TRADITION

CONDENSED COURSE

Joseph Sweeney

New Hope, PA

Master the essentials of landscape painting in the area made famous by the Pennsylvania Impressionists. The New Hope countryside will inspire you with its views of the Delaware River, as it did Daniel Garber, Edward Redfield, Fern Copage, and other American Masters. Topics include mixing color to achieve a sense of light and air; capturing time of day; as well as varnishing, framing, photographing, and transporting finished pieces.

7 weeks, April 11 - May 23

9:30 a.m. - 4:00 p.m.

Tuition: \$675 for 1.5 credits or \$465 non-credit

Register by: April 4

THURSDAYS

January 19 - April 26
Register by: January 6

9 a.m. - 12 p.m.

PR 600EL WOODCUT AND RELIEF PRINTMAKING

Ronald Wyffels

6th Floor Print Shop/Samuel M.V. Hamilton Building
Printing from a drawing carved into wood or a linoleum block is the oldest and most straightforward form of printmaking. Its beauty and expressive power can be seen in the work of Albrecht Dürer and the German Expressionists. All aspects of the process will be covered, including drawing on the block, carving your design and printing techniques for making black-and-white and color prints. Lab fee of \$20.

DR 602E PORTRAIT IN PASTELS

Theodore Xaras

Studio 1/Historic Landmark Building
The immediate subtlety that can be achieved through soft and hard pastel is particularly suited for the portrait study. Learn historical and contemporary techniques of hatching, blending, layering, and color mixing as applied to rendering convincing portraits. Discussion and demonstration of various surfaces, pastel varieties and mixed media techniques will expand your knowledge of the medium. Drawing experience recommended.





FRIDAYS

January 20 - April 27
Register by: January 6

9 a.m. - 12 p.m.

PT 604ED IN-DEPTH WATERCOLOR CONDENSED COURSE

James Toogood

Room 610/Samuel M.V. Hamilton Building

This course is designed for students seeking to enrich their overall knowledge of painting with an in-depth look at watercolor. Topics will include a thorough investigation of watercolor materials and a wide range of techniques, with subjects ranging from landscape and still life to portrait and figure poses. Open to dedicated watercolorists and to acrylic/oil painters looking to broaden their skills.

10 weeks, February 3 - April 6

9 a.m. - 1:30 p.m.

Tuition: \$675 for 1.5 credits or \$465 non-credit
Register by: January 27

PT 603EI INTERIOR DRAWING AND PAINTING

Peter van Dyck

Studios 2 & 3/Historic Landmark Building

Using the interior spaces of PAFA as subject matter, discover engaging and original compositions. Learn to organize values and colors to simplify the complex appearance of subject matter and develop a sense of light and space. Drawing, perspective, composition and strategies for working on location will be covered. Suggested media: oil, pastel or charcoal.

THURSDAYS *continued*

12:30 - 3:30 p.m.

DR 603ED RENAISSANCE DRAWING TECHNIQUES - NEW!

Robert Waddington

Studios 2 & 3/Historic Landmark Building

The invention of perspective and the introduction of paper in Europe in the 13th century ushered in the heights of Renaissance drawing. Draw in PAFA's Cast Hall and from the costumed model and learn techniques specifically developed to describe three-dimensional form. Work in charcoal, conté crayon and chalks, as well as pen-and-ink wash on toned paper. Schematic and perspective drawings, including compositional drawings for fresco, panel and canvas painting, will also be discussed.



Photo: Nikolai Fox | Art ©Estate of Stuart Davis/Licensed by VAGA, New York, NY

IN 716E VISIT THE VAULTS WITH STUART SHILS AND BILL SCOTT

The PAFA Museum's permanent collection houses over 2,000 paintings, 450 sculptures and 11,000 works on paper that have been rarely exhibited. Join painters Stuart Shils and Bill Scott as they explore the PAFA storage vaults to discover and analyze some of these little known treasures from PAFA's vast collection. Shils and Scott, accompanied by PAFA Museum Registrar Gale Rawson, will share some of their favorites; point out details in contemporary, Modernist and Impressionist works that have inspired them in their own studio practices; and lead group conversations in examining technical and aesthetic concerns. Space is limited.

3 weeks, Fridays, April 13, 20 & 27

1 - 2:30 p.m.

Tuition: \$75 per session or \$200 for all three

Bill Scott is a painter and printmaker, PAFA alumnus, independent curator and corresponding editor for Art in America. He is also a critic in PAFA's Certificate/BFA program. Known for his complex and gorgeously rich abstract paintings based on nature, he has had many solo exhibitions in Philadelphia, New York, San Francisco and London, and has received numerous honors and awards. He is represented by Hollis Taggart Galleries, New York.

Stuart Shils (see page 4)

CE OPEN DRAWING

Studio 4/Historic Landmark Building

An opportunity to sharpen your drawing skills, share ideas and meet new friends and faculty! Work from a life model in your medium of choice.

A CE faculty member will be available for assistance or discussion. If not a current student, must have previously enrolled in a CE class and show a PAFA student ID for admittance.

Wednesdays, February 1 - April 25
(no class on March 7, Spring Break)

6:30 - 9:30 p.m.

Fee: \$5 at the door or \$50 for the entire session
(pre-registration required)



- Open to all levels of experience (unless otherwise noted)
- Feature demonstrations, lectures, studio activity and critique

SCHEDULE*

- 3 hours once a week for 14 weeks
- **No 14-week classes will meet during Spring Break:** Monday, March 5 - Sunday, March 11. Short and Condensed Courses will run through the break.

TUITION*

- \$675 for 1.5 undergraduate credits
- \$465 for non-credit
- Additional lab and materials fees where indicated

FOR K-12 EDUCATORS

- All CE courses are eligible for Act 48 hours and New Jersey Department of Education Professional Development credit (See page 25 for details)

*Unless otherwise indicated

SATURDAYS

January 21 - April 28
Register by: January 6

9 a.m. - 12 p.m.

DR 605E2 LIFE DRAWING II

John Horn
Studio 4/Historic Landmark Building
Lectures and drawing demonstrations on proportions, skeletal framework, surface form, and movement of the figure will help you develop the ability to draw the human form with anatomical and spatial accuracy. Designed to advance the skills of students who have studied drawing previously.

PT 616ES BEGINNING PAINTING CONDENSED COURSE



Allison Syvertsen
Room 461/Samuel M.V. Hamilton Building
A practical, accessible introduction to the materials and basic techniques of oil painting. Learn palette layout, color mixing, methods of paint application, and the selection, handling and clean-up of materials. Subject matter will include interesting still life arrangements, interiors and window views to investigate color and composition. Suitable for absolute beginners and those with limited painting experience seeking further instruction and practice. 10 weeks, January 28 - March 31
9 a.m. - 1:30 p.m.
Tuition: \$675 for 1.5 credit or \$465 non-credit
Register by: January 20

SC 602E STONE CARVING

Steve Nocella
7th Floor Sculpture Shop/
Samuel M.V. Hamilton Building
Explore the possibilities of stone carving by using traditional and nontraditional methods. All processes from rough carving to polishing will be covered, and various tools and techniques will be demonstrated.

PT 707E INTRODUCTION TO WATERCOLOR CONDENSED COURSE

Richard Estell
Room 611/ Samuel M.V. Hamilton Building
Gain a comprehensive and organized introduction to the materials and techniques of this challenging medium, as well as an enlightening overview of its historical development with a focus on the American masters. Students will work from still life and the figure, supplemented by copying exercises, a traditional academic method. Designed to inspire both beginning students and those with some experience. 7 weeks, March 17 - April 28
9 a.m. - 3:30 p.m.
Tuition: \$675 for 1.5 credits or \$465 non-credit
Register by: March 9

12:30 - 3:30 p.m.

SC 600E FIGURE AND PORTRAIT MODELING



John Horn
7th Floor Sculpture Shop/
Samuel M.V. Hamilton Building
This sculpture course introduces the conceptual and practical aspects of modeling the figure in clay on an armature from direct observation. Experienced students will model a 24-inch figure based on volume, proportion, architectonic construction, and spatial displacement of form. Beginning students will sculpt a life-size portrait first. Technical procedures discussed will include armature construction, orientation of the armature to the model, clay modeling (methodology), the specific use of tools, and basic elements of plaster casting.



Larry Francis, *Going Down River*, 2009, oil on canvas, 34 x 96 inches. Courtesy Gross-McCleaf Gallery, Philadelphia

DR 600BB DRAWING: BACK TO BASICS - NEW!



Michael Kowbuz
Room 610/Samuel M.V. Hamilton Building
The goal of this course is to enable you to draw what you see competently and with confidence. Drawing is not only the basis for other creative endeavors like painting and sculpting, but also enriches your experience of the world. Fundamentals will be addressed including line, shape, perspective, composition and shading. Draw from objects, models, the landscape and more while learning the characteristics and proper use of pencils, charcoal, inks, colored media, erasers and papers. Ideal for beginners and those in need of a refresher.

PT 610E FIGURE PAINTING CONDENSED COURSE

Frederic Kaplan
Room 1021/Samuel M.V. Hamilton Building
Paint from the life model and make full figure, head and torso studies. Gain insights into anatomy, composition, proportion, light and shade, color mixing and painting technique. Includes demonstration, lecture and discussion of master paintings of the figure. All levels welcome, but drawing experience is required. 7 weeks, March 11 - April 29 (no class April 8)
10 a.m. - 4:30 p.m.
Tuition: \$675 for 1.5 credits or \$465 non-credit
Register by: March 2

SUNDAYS

PT 600E STILL LIFE DRAWING AND PAINTING SHORT COURSE



David Wilson
Room 1010/Samuel M.V. Hamilton Building
This course is designed to help the beginning artist become familiar with a variety of materials and techniques through weekly study of still-life objects. Students will learn to analyze and construct form, space, and volumetric relationships through a series of drawings, as well as monochromatic, limited color, and full color paintings. Time spent on each piece will expand throughout the semester in an effort to explore a more complex treatment of form, value, composition, color, surface, and design. 10 weeks, January 29 - April 1
10 a.m. - 1 p.m.
Tuition: \$450 for 1.0 credit or \$390 non-credit
Register by: January 20

PT 612E CITY LANDSCAPE SHORT COURSE

Larry Francis
Outside Locations
Work along the Schuylkill River, in parks and on secluded city streets in the drawing or painting medium of your choice. Compose from observation, and learn to capture light, space and color with traditional as well as contemporary painting and drawing techniques. Learn the practical aspects and artistry of working outdoors from a master of the plein-air practice. 6 weeks, April 15 - May 20
9 a.m. - 2 p.m.
Tuition: \$450 for 1.0 credit or \$390 non-credit
Register by: April 6

- Non-credit workshops offer a condensed format to quickly learn about a given topic. Designed for all levels of experience, unless otherwise indicated.
- Please refer to individual descriptions for dates, times, tuition and any applicable lab/materials fees.

- All PAFA CE workshops are eligible for Act 48 credit hours and New Jersey Department of Education Professional Development credit. (See page 25 for details)



Erin Murray, *Miesian Influence Loop*, 2011
oil on MDF panel, 16 x 24 inches

IN 747E CRITIQUE SESSIONS

Room 463/Samuel M.V. Hamilton Building
If you've been feeling isolated in your studio, or have been taking classes but are unsure of your direction, stimulate your art-making with a group critique, led by experienced painters and art-world professionals, Kassem Amoudi, Michelle Oosterbaan, Joshua Marsh, Erin Murray, Hiro Sakaguchi and Michael Moore (see page 29 for biographies). The group critique is an extremely valuable format to receive insightful responses to your artwork. Each participant will receive feedback and advice and benefit from listening to the critiques of others in the group. The atmosphere is always constructive and supportive, never judgmental or confrontational.

Three Saturdays, beginning at 9 a.m.:
February 11: Kassem Amoudi and Michael Moore
March 24: Hiro Sakaguchi and Michelle Oostberbaan
April 28: Erin Murray and Joshua Marsh
Tuition: \$65 per session or all three for \$175

JANUARY

PT 602EW FACIAL FEATURES FOR PORTRAITS - NEW!

Robert Waddington

Room 1023/Samuel M.V. Hamilton Building

A must for anyone interested in portraiture! Learn to draw and paint the eyes, nose, mouth and ears in frontal, three-quarter and profile views. Discover the anatomy of the features and their relationships to the structure of the head. Each feature will be studied separately and then combined to form a portrait. Clear and precise explanations of anatomy, structure, form and color will be presented via illustrations and models. Associated topics include rendering facial hair and adornments such as eyeglasses and jewelry.

Saturday and Sunday, January 28 & 29

9 a.m. - 5 p.m.

Tuition: \$225

Register by: January 20

FEBRUARY

PT 604IW WATERCOLOR FUNDAMENTALS

James Toogood

Room 1021/Samuel M.V. Hamilton Building

Designed for those who wish to acquire or improve their basic skills in watercolor painting. A variety of materials and techniques will be discussed, including the selection of papers, brushes and pigments, as well as transparent and opaque painting methods. Students will work from still life, landscape or their own source material.

Saturday and Sunday, February 4 & 5

9 a.m. - 5 p.m.

Tuition: \$225

Register by: January 27

DR 600EW DRAWING FUNDAMENTALS

Frederic Kaplan

Room 1021/Samuel M.V. Hamilton Building

Sharpen your drawing skills through perceptual drawing exercises. Learn clear approaches to drawing forms in perspective, drafting ellipses, measuring proportions, sighting relationships, using positive and negative shape, controlling composition, and seeing groups of forms as a whole. A solid introduction for beginners, or an effective refresher course for more experienced artists looking to refine their craft.

Saturday and Sunday, February 11 & 12

9 a.m. - 5 p.m.

Tuition: \$225

Register by: February 3

IN 605E MATTING WORKS ON PAPER

James Toogood

6th Floor Print Shop/Samuel M.V. Hamilton Building

Tired of spending a small fortune at framing shops? Learn how to mat works on paper archivally, with a few simple, inexpensive tools. There will be a demonstration of all the procedures required to properly prepare your work for framing, from cutting and hinging mats to fitting and final assembly. You will then be able to work on your own project under the supervision of the instructor. Discover the ease and confidence to mat works for home, exhibition, and gifts. A great preparation for the *CE Annual Student Exhibition* in April! (Please note: this workshop does not address frame construction).

Saturday, February 11

9 a.m. - 5 p.m.

Tuition: \$125

Register by: February 3

IN 610EW COLLAGE - NEW!

Anthony Ciambella

Room 1021/Samuel M.V. Hamilton Building

Newspaper & magazine cut-outs, fabric swatches, and photographs are just a few of the materials artists use to "glue down" and make art. Explore the various adhesives and tools designed for artists as well as some of the more popular non-artist commercial products available. Composition, color, texture, and content will be discussed. Personal vision and development will be encouraged. Open to all levels.

Saturday and Sunday, February 18 & 19

9 a.m. - 5 p.m.

Tuition: \$225

Register by: February 10

IN 639EG CLASSICAL COMPOSITION FOR CONTEMPORARY DESIGN - NEW!

Charles Muldowney

Room 465/Samuel M.V. Hamilton Building

Artists throughout the centuries have relied on composition, color, value, and other design principles to amplify their artistic expression. Study classical compositional devices including the golden ratio to help in understanding paintings and strengthen your artistic expression. Other design concepts to be examined include: color theory, value, space, line, gesture, economy, pattern, and light.

Saturday, February 18

9 a.m. - 5 p.m.

Tuition: \$125

Register by: February 10

PR 600EW REDUCTION RELIEF PRINTMAKING - NEW!

Lisa Hamilton

6th Floor Print Shop/Samuel M.V. Hamilton Building

Reduction relief printing is a multicolor printing technique in which a single block is carved down to print separate colors at different stages as the block is reduced. Students will explore reduction relief printing to create a 3- or 4-color print. Demonstrations and discussions of relief carving, printing, registration, and paper will be covered. Students will leave with a multicolor limited edition of prints.

Saturday and Sunday, February 25 & 26

9 a.m. - 5 p.m.

Tuition: \$225 + \$10 lab fee

Register by: February 17

IN 603EW INTENSIVE COLOR MIXING

Joshua Marsh

Room 1021/Samuel M.V. Hamilton Building

This workshop is designed to enhance your color mixing skills and heighten your color perception. Focus will be on accurate color analysis, mixing highly specific color relationships, and modifying minute intervals of color. The practical issues of palette organization, storing mixed color, and remixing colors will be addressed. You will encounter the highly relative nature of color through focused exercises and painting in oil from carefully constructed still life arrangements.

Saturday and Sunday, February 25 & 26

9 a.m. - 5 p.m.

Tuition: \$225

Register by: February 17

EVENING LECTURE SERIES

We are pleased to present this new series of evening art lectures. Topics range from practical concerns of the artist, art history appreciation and career development.

IN 643EM MASTERS OF COLOR

Neil di Sabato

Room 420/Samuel M.V. Hamilton Building

Advance your understanding of color, the most elusive and complex element in art making. View master paintings, textiles, tribal, and folk/outsider art to learn how color drives the power and meaning of these works. Examples will range in time from Antiquity to Early-Renaissance to the present.

Tuesday, March 20

6:30 - 9:30 p.m.

Register by: March 16

IN 647E PRACTICAL CONCERNS OF THE ARTIST

Anthony Ciambella

Room 1021/ Samuel M.V. Hamilton Building

The art materials you choose today directly affect you and your work in the future. This lecture examines materials used by traditional and contemporary artists and how these materials react to time, misuse, and the environment. Topics include wood, canvas, Mylar, paper, oil, acrylic, and mediums. Included are examples of materials, a framing demonstration, and a Health Hazards for Artists slide show.

Tuesday, March 27

6:30 - 9:30 p.m.

Register by: March 23

IN 622EC CAREERS IN THE ARTS: APPLIED ART AND DESIGN IN THE FILM INDUSTRY

Clarissa Shanahan Schirmer

Room 420/Samuel M.V. Hamilton Building

Ever wonder who creates the paintings and props we see in films? Who designs the sets? How does the art department fit in the puzzle of a film production?

This seminar is an informational presentation about the many different roles of artists and craftspeople in the film industry, presented by a career artist and veteran of the film industry. Topics include: the breakdown of roles in a film production, specifically about how the art and scenic departments fit in; the variety of projects are typically going on in the industry; what skill set is needed, and how to work up an appropriate portfolio for entry.

Tuesday, April 3

6:30 - 9:30 p.m.

Register by: March 30



IN 747E THE ARTIST IN THE STUDIO

Theodore Xaras

Room 469/Samuel M.V. Hamilton Building

Discover the secrets of making a Master painting, from initial sketches to the finished piece. Using the best examples from the Renaissance through contemporary times, see all stages of the time-honored processes including conceptual drawings, color sketches, and in-depth anatomical, drapery and prop studies, plus photographs of artists at work. Artists covered include Michelangelo, Leonardo, Rembrandt, Ingres, David, Cézanne, Picasso and more.

Tuesday, April 10

6:30 - 9:30 p.m.

Register by: April 6

IN 648ES JOHN SINGER SARGENT

Kyoko Miyabe, PhD

Room 420/Samuel M.V. Hamilton Building

John Singer Sargent was not just a fashionable portrait painter, but rather an artist who sought to capture the ambiguities and complexities of his subjects. Examine Sargent's early Venetian paintings and portraits of children and women, including *The Daughters of Edward Darley Boit* and *Madame X*, in comparison to the work of his contemporaries to discover how he defied the aesthetic and moral complacencies of his time.

Tuesday, April 17

6:30 - 9:30 p.m.

Register by: April 13

Tuition is \$35 for each lecture or \$150 for the entire series (no refunds)

MARCH

DR 720EW DRAWING KI

Paul Hamanaka

Room 465/Samuel M.V. Hamilton Building

Expand your artistic expression through understanding of "Ki," or energy, spirit, and soul. Learn to see underlying invisible lines, shapes and energies throughout the picture plane through lectures on master drawings and paintings, compositional exercises and life drawing. Designed for students with drawing experience.

Saturday and Sunday, March 3 & 4

9 a.m. - 5 p.m.

Tuition: \$225

Register by: February 24

IN 621ET FROM STUDIO TO GALLERY: THE BUSINESS OF ART SEMINAR

Joseph Sweeney

Room 420/Samuel M.V. Hamilton Building

How can you make it in the art world? Accomplished landscape painter and art-market veteran Joe Sweeney shows you how to position yourself as a highly enterprising artist. Topics include marketing and social media, grant writing, acquiring gallery representation, teaching for supplemental income, frames and presentation, contracts, commissions and copywriting. Receive assistance in portfolio preparation, writing your resume and artist statement, and digitally photographing artwork.

Saturday and Sunday, March 10 & 11

10 a.m. - 4 p.m.

Tuition: \$195

Register by: March 2

IN 601EW COLOR WORKSHOP: PASSION FOR PALETTE - NEW!

Michelle Oosterbaan

Room 465/Samuel M.V. Hamilton Building

Examine how color influences and creates compelling personal storytelling. Explore how the science and psychology of color play key roles in composing dynamic visual narratives. Learn to fine tune and tailor your current palette to support your work's message and to create brilliant optical effects with emotional resonance. Students may bring work(s) in progress for color diagnosis, and work on it in the medium of their choice.

Saturday and Sunday, March 10 & 11

9 a.m. - 5 p.m.

Tuition: \$225

Register by: March 2

PT 604EW INTERMEDIATE/ADVANCED WATERCOLOR

James Toogood

Room 1021/Samuel M.V. Hamilton Building

This workshop will focus on the materials and techniques used in painting realistic landscapes, still-life set-ups and portraits in watercolor, with attention to paint and pigment, attaining a feeling of light, and achieving realistic textures. Students will be encouraged to develop their own interests and bring in their own source material and samples of their work for a helpful critique.

Saturday and Sunday, March 17 & 18

9 a.m. - 5 p.m.

Tuition: \$225

Register by: March 9

Michelle Oosterbaan, *When Stars Unfold like Tents*, 2011, colored pencil and graphite on paper, in process, 52 x 75 inches





Hiro Sakaguchi, *Bear Fishing*, 2008
acrylic, oil on canvas, 30 x 40 inches

PR 604EW MONOTYPE

Tony Rosati

6th Floor Print Shop/Samuel M.V. Hamilton Building
Monotype is an immediate way to create painterly prints. Learn color as well as black-and-white approaches, painterly and drawn methods in oil- and water-based ink, and oil, watercolor or gouache paint. Large and small format image-making will be demonstrated. Print by press or hand and take home a portfolio of work.

Saturday and Sunday, March 24 & 25

9 a.m. - 5 p.m.

Tuition: \$225 + \$10 lab fee

Register by: March 16

PT 608EW ACRYLIC PAINTING

Hiro Sakaguchi

Room 465/Samuel M.V. Hamilton Building
Versatile, fast-drying and easy to clean-up, acrylics are ideal for busy people who want to enjoy learning to paint. Students will work from a variety of subject matter to learn and hone the basic aspects of painting technique, color, form and composition. Open to all levels.

Saturday and Sunday, March 31 & April 1

9 a.m. - 5 p.m.

Tuition: \$225

Register by: March 23

APRIL

DR 605EW DRAWING HANDS AND FEET - NEW!

Neil di Sabato

Room 465/ Samuel M.V. Hamilton Building
Novice and experienced artists alike struggle with the realistic rendering of hands and feet, elements that add credibility and expressiveness to figure and portrait drawings. Learn to translate these complicated forms from simple planar construction to complex, intricate drawings. Students will explore this subject through various materials and gain inspiration from master and contemporary drawings.

Saturday and Sunday, April 14 & 15

9 a.m. - 5 p.m.

Tuition: \$225

Register by: April 6

IN 612EW MANUSCRIPT ILLUMINATION

Clarissa Shanahan Schirmer

Room 810/Samuel M.V. Hamilton Building

Historically, book arts were reserved for royalty, the aristocracy, and the church. Religious texts were adorned with magnificent illuminations to enhance their message. This workshop will address the pre-Medieval tradition of illuminating manuscripts, using both raised and flat gilded lettering, as well as modern-day versions. Students will produce illuminations of their own, based both on traditional and contemporary designs.

Saturday and Sunday, April 21 & 22

9 a.m. - 5 p.m.

Tuition: \$225 + \$25 materials fee

Register by: April 13

IN 615EW BOOKBINDING WORKSHOP

Robert Waddington

Room 810/Samuel M.V. Hamilton Building

A handmade book is a work of art that may be used as a journal, photo album or scrapbook - not to mention a great gift. Learn simple and advanced binding methods, page layout and construction, and final assembly. The ancient technique of marbling paper will also be introduced as a dazzling decorative element. Come away from the workshop with completed, one-of-a-kind soft and hardcover books.

Saturday and Sunday, April 28 & 29

9 a.m. - 5 p.m.

Tuition: \$225 + \$10 materials fee

Register by: April 20

MAY

DR 605EW LANDSCAPE IN PERSPECTIVE

Joseph Sweeney

Room 610/ Samuel M.V. Hamilton Building

Specifically designed for those students who have always had trouble with perspective in the landscape - the barn roof, the bridge, the height of trees, the figure in the field. Learn basic and advanced drawing techniques for one-, two- and three-point perspective, atmospheric effects and all aspects of creating convincing depth in your landscape work.

Saturday and Sunday, May 5 & 6

9 a.m. - 5 p.m.

Tuition: \$225

Register by: April 27

DR 610EW TEXTURES OF NATURE - NEW!

Frederic Kaplan

Room 610/Samuel M.V. Hamilton Building

Frustrated when trying to draw and paint moving clouds, the intricacies of water and trees with an infinite number of leaves? Learn to render these and other complex outdoor elements to improve your landscape ability. Through study of natural objects and the work of master artists, including a visit to the PAFA museum, learn to understand and simplify the shape, structure and pattern of natural forms.

Translate your new knowledge into practice by drawing on location in pencil, charcoal, ink and watercolor.

Saturday and Sunday, May 12 & 13

9 a.m. - 5 p.m.

Tuition: \$225

Register by: May 4



Joseph Sweeney, *Farm on New Road*, pastel

SPRING 2012 REGISTRATION INFORMATION

4 WAYS TO REGISTER!

Registration begins December 5

Register early to guarantee enrollment and prevent course cancellations.

- 1. ONLINE:** pafa.edu/ce
- 2. PHONE:** 215-972-7632
- 3. MAIL:** Continuing Education Programs*
Pennsylvania Academy of the Fine Arts
128 North Broad Street
Philadelphia, PA 19102

4. IN PERSON: Visit the Continuing Education office on the 3rd Floor of the Samuel M.V. Hamilton Building

* Please mail a completed registration form with check, money order, or credit card information. We accept VISA, MasterCard, American Express and Discover Card. Make checks or money orders payable to "PAFA."

STUDENT ADVISING

For assistance in course selection or to make an appointment, call 215-972-7632 or email continuinged@pafa.edu.

Continuing Education Programs Office Hours
Monday - Thursday 9 a.m. - 7 p.m.
Friday 9 a.m. - 5 p.m.
Saturday 9 a.m. - 1 p.m.

During school vacations, the office will be open Monday through Friday, 9 a.m. - 5 p.m.

CREDIT

PAFA is accredited through the National Association of Schools of Art and Design (NASAD) and is a member of the Association of Independent Colleges of Art and Design (AICAD).

Undergraduate Credit

14-week courses are available for 1.5 undergraduate credits. Short and Condensed Courses are available for 1.0 or 1.5 undergraduate credits (please refer to individual descriptions). If taken for credit, the student may incur additional coursework, and will receive a course grade and appropriate credit that will appear on an official PAFA transcript, if requested.

Changes in credit status must be arranged through the CE office prior to the third class. No refunds for changes from credit to non-credit.

FOR K-12 EDUCATORS

Act 48 Continuing Professional Education

PAFA is approved by the state of Pennsylvania to offer Act 48 hours for all of its courses and workshops as follows: 1.5 undergraduate credit CE courses are available for 42 Act 48 hours. Workshops, lectures and seminars are eligible for the number of contact hours for which they meet (excluding lunch breaks). Educators electing to receive Act 48 hours must notify the Continuing Education Programs office when registering.

New Jersey Department of Education Professional Development Provider System

PAFA is approved by the state of New Jersey to offer Professional Development Credit for all of its courses and workshops as follows: 1.5 undergraduate credit CE courses are available for 42 credits. Workshops, lectures and seminars are eligible for the number of contact hours for which they meet (excluding lunch breaks). Educators electing to receive Professional Development Credit should notify the Continuing Education Programs office when registering.

Graduate Credit

K-12 educators enrolled in the Advanced Curriculum for Educators (ACE) program may earn graduate credit in select CE courses.

- \$825 for 1.5 credits @ \$550 per credit
- 1.5 credit course: 42 hours class contact time plus 18 hours outside course work = 60 hours
- 1.0 credit course (limited availability): 30 hours class contact time plus 15 hours outside course work = 45 hours

Please visit pafa.edu/CE for application information.

REGISTRATION DEADLINES

- January 6 for classes beginning January 17 - 23
- January 27 for Saturday high school classes
- Registration deadlines vary for Short and Condensed Courses, Workshops, Lectures and Seminars and Special Programs. Please refer to individual course descriptions.

COURSE TUITION AND FEES

\$675 for 1.5 undergraduate credits
\$465 for non-credit

Tuition varies for Short and Condensed Courses, Workshops, Lectures, Seminars and Special Programs. Please refer to individual course descriptions.

Lab and Material Fees

Please consult individual course descriptions for any applicable lab or materials fees.

Late Fee

Registrations received after 5 p.m. on their deadline date will be assessed a late fee of \$25.

Locker Rental

Lockers are available on a first-come, first-served basis for \$20.

DISCOUNTS

Frequent Student Discount*

- Accumulate five 14-week courses (or equivalent) and receive your sixth course of equal or lesser value free.
- Accumulate five two-day workshops (or equivalent) and your sixth is free!

Referral Discount*

Refer a first-time Continuing Education student, and you both receive a 10% tuition discount on one course or workshop.

Membership Discount*

PAFA Members at the "Friend" level and above receive a 10% tuition discount on regular courses. Lab, materials and locker fees are not eligible for discount.

*Restrictions apply.

CE COMMUNITY SCHOLARSHIP - NEW!

PAFA Continuing Education is pleased to present the "CE Community Scholarship" to assist students who demonstrate dedication to their art.

Requirements:

- Completed application form
- Completed CE registration form
- Portfolio of 5 - 10 pieces (may be digital images in JPG format on a CD)
- Personal statement (one page)
- Letter of support from a teacher
- A copy of your most recent tax return (or comparable)

Partial tuition scholarships will be awarded on a competitive basis on the basis of need and merit.

Application deadline: January 6

Application is available to download from pafa.edu/ce. Please call 215-972-7632 for more information.

The CE Community Scholarship is made possible in part by a generous contribution from the Dry Family Foundation. For information about making a gift to support the CE Community Scholarship, please contact the Development Department at 215-972-2077.



GIFT CERTIFICATES

A gift certificate for a course or workshop makes a great gift! Call 215-972-7632 for more details.

REFUND POLICY

Withdrawals must be made in writing via letter or email to the Continuing Education Programs office. A \$30 administrative fee will be assessed per dropped course and \$15 per workshop. Tuition refunds will be adjusted according to the following schedule (less the administrative fee), unless otherwise indicated.

14-week Courses

Prior to one week before the 1st class100%
 After the above, prior to the 2nd class 75%
 After the above, prior to 3rd class 50%
 After the above0%

Condensed/Short Courses

Prior to one week before the 1st class100%
 After the above, prior to the 2nd class50%
 After the above0%

Workshops

Prior to one week before the 1st day100%
 After the above, prior to the 1st day50%
 After the above0%

Master Class with Alex Kanevsky

Painting and Collage Workshop with Ken Kewley
 Portrait Painting Workshop with Paul Dusold
 Evening Lecture Series
 Visit the Vaults with Stuart Shils and Bill Scott
No refunds

COURSE CANCELLATIONS

If minimum enrollment is not met, a class will be cancelled on or shortly after its registration deadline date. Students will be notified by phone and may choose to transfer into another class or receive a full tuition and fee refund. Please register early to help prevent course cancellation.



WEATHER/ EMERGENCY CLOSING

The closing, delayed opening, or early dismissal of the Pennsylvania Academy of the Fine Arts will be determined jointly by the Dean of the School and the Museum Director, with approval of the President. Such closing or delay would include the school, galleries and administrative offices. Decisions regarding the cancellation of special events and evening classes may be made later in the day. To find out if PAFA is closed or delayed you should check one of the following:

- Our website - messages will be updated on the PAFA homepage, pafa.edu
- PAFA's main number, 215-972-7600 - An outgoing message advising of a close or delay will be recorded by 6:30 a.m.
- KYW (1060AM) - Listen for PAFA's code 150 (Continuing Education's code is 2150)
- WPVI-TV 6ABC - Lists the school by name
- NBC 10 - Lists the school by name

TRANSPORTATION AND PARKING

PAFA is conveniently located near the SEPTA Market East and Suburban train stations, bus and trolley stops and PATCO Hi-Speed Line station stops. For SEPTA information, call 215-580-7800 or visit www.septa.org. Discounted parking is available at adjacent Parkway Corporation parking lots. Tickets must be validated by Security staff.

REGISTRATION FORM

- Registration begins **DECEMBER 5**
- See page 25 for registration deadlines
- Late registrations will incur a \$25 late fee

Date _____ Date of Birth _____

Last Name _____ First Name _____ Middle Initial _____

Address _____ City _____ State _____ Zip _____

Phone (day) _____ Phone (evening) _____ Email _____

Course #	Title	Day/Time	Instructor	Tuition	Lab/Mat Fee	Total

METHOD OF PAYMENT

VISA Mastercard AmEx Discover Check* Cash

Name on Credit Card _____

Credit Card Number _____ Expiration Date _____

Signature _____

Check # _____ *Make checks payable to PAFA

Academy Membership Level _____ Expiration Date _____

Tuition Total
Locker
Sub Total
Discount*
TOTAL

*Academy Members at the Friends Level and above receive a 10% discount (tuition only)

Have you taken a class here before?

Yes No

How did you find out about us?

- Radio (What station?) _____
What is your favorite station? _____
- Newspaper (Which one?) _____
- Internet (What site?) _____
- Other (Please specify) _____

How did you receive this catalogue?

- Mailed to me
- Picked it up at: _____

Are you an Academy alumnus?

Yes No
 If Yes, which program/year? _____

Please check if you would like more information about Academy Academic Programs

- Certificate Bachelor of Fine Arts
- Master of Fine Arts Post-Baccalaureate

I wish to enroll in the CE Core Curriculum Program

For K-12 educators

- I wish to enroll in the ACE Program for K-12 Educators
- I am taking a course for Act 48 credit or New Jersey Dept of Ed Professional Development Credit

Professional Educator I.D.# _____

For Office Use: Class Book _____ Materials _____ Database _____

PAFA offers a variety of programs to help you meet your artistic goals. For more information, please contact the Office of Admissions at admissions@pafa.edu or 215-972-7625.

CERTIFICATE PROGRAM

At the heart of the Academy's educational programs is the Certificate Program, a four-year curriculum of intense studio education that offers four majors: Drawing, Painting, Printmaking, and Sculpture.

BACHELOR OF FINE ARTS

PAFA offers two choices for students wishing to pursue an undergraduate degree program: the Academy BFA and the Coordinated BFA program with the University of Pennsylvania. Academy BFA students study exclusively at PAFA, taking both studio arts and the liberal arts component offered by the Academy. Students also have the choice of enrolling in the Certificate Program and earning a Bachelor of Fine Arts degree from the University of Pennsylvania.

FOR CONTINUING EDUCATION STUDENTS CONSIDERING MATRICULATION INTO THE CERTIFICATE PROGRAM

Select courses taken in the Continuing Education Program may be evaluated for transfer into the Certificate Program, based on satisfactory completion of coursework and a review of the student's portfolio. If approved, a maximum of 15 credits may be accepted as transfer credits. For more information, contact the Office of Admissions at 215-972-7625.

FAMILY ARTS ACADEMY

PAFA is proud to present the Family Arts Academy, designed to promote family engagement through providing a positive and nurturing environment for families to learn, create, and celebrate art together. The program features art workshops and classes on Saturday and Sunday afternoons available FREE to all Philadelphia School District children and their families, PAFA members and to non-members with museum admission.

POST-BACCALAUREATE CERTIFICATE IN GRADUATE STUDIES

This is an individually designed program of study for those who wish to develop their artistic skills, further their formal education, and be competitive for admission to graduate degree programs. This studio-based program offers formal drawing and seminar classes as well as private and group critiques with an excellent faculty.

MASTER OF FINE ARTS PROGRAM

This studio-based program allows fine artists to realize their creative potential while providing a solid intellectual and practical foundation for artistic expression. Students are encouraged to achieve independent aesthetic development through a broad variety of desired approaches.



Robert Waddington

The Continuing Education Faculty comprises consummate professional artists and teachers, with national and international reputations. Look for complete faculty biographies and examples of their artwork on our website: pafa.edu/CE.

Kassem Amoudi is a graduate of Helwan University in Cairo, Egypt, and received an MFA from PAFA. An award-winning painter with an extensive national and international exhibition record, Amoudi is a faculty artist-in-residence in the MFA program at Vermont College/Union Institute and University.

Roger Chavez studied at Maryland College of Art and Design, and received a Certificate from PAFA, a BFA from the University of Pennsylvania, and an MFA from American University in Washington, D.C. He is also an adjunct faculty member at Ursinus College.

Anthony Ciambella is a painter, sculptor, mixed media and digital artist. He received a Certificate from PAFA and completed the Conservation Apprenticeship Program. He teaches in the PAFA Certificate/BFA program, was a conservator at PAFA for many years and maintains a private practice in art conservation.

Katie Dillon Low is a sculptor and installation artist. She received her MFA degree and Post Baccalaureate Certificate from PAFA after completing her BFA at Belmont University in Nashville, TN.

Neil di Sabato has a Certificate in Painting from PAFA and an MFA and BFA from the University of Pennsylvania. He has taught and administered art programs for over 25 years, and his paintings and drawings have been exhibited widely and recognized through awards, honors and publications.

Pavel Efremoff has a Certificate in Sculpture from PAFA and studied at the Conservation Studio for Art in Philadelphia. He is an accomplished sculptor and art restorer. His work is influenced by the mythology and history of both the Russian and American cultures in which he was raised.

Richard Estell is a painter with an MFA from Cornell University and a BFA from the Cleveland Institute of Art. He has taught extensively and is currently an adjunct professor at the Community College of Philadelphia and adjunct faculty at Penn. He has exhibited work at in New York and Philadelphia, and has been featured in American Artist magazine.

Larry Francis has been painting the city landscape for over 30 years and his paintings are subtle elocutions of color, space and light. He is a graduate of PAFA and is represented by Gross-McCleef Gallery in Philadelphia.



John Horn

Yasuji Paul Hamanaka was born in Japan and studied at the Academie de Port-Royal, Paris, and Musashino Art University, Tokyo, before receiving his BA at Eastern University and MFA at PAFA. In search of art that touches, energizes and inspires the human spirit he incorporates concepts of Zen, ying and yang, taoism, tantra, and ki/ch'i into his art making.

Lisa Hamilton is a printmaker and sculptor. She received an MA in Art Education from Tyler School of Art, a BFA from University of the Arts, and a Certificate from PAFA. She is the Print Shop Manager at PAFA and is an adjunct faculty member in the Certificate/BFA Program.

Elizabeth Hill is a sculptor with a BFA from the University of the Arts. Her work has been exhibited nationally and internationally and has received numerous reviews, awards, and grants. Her background in nursing has influenced her work, which is rooted mainly in community-building projects where the arts are tools of healing and education.

John Horn is an Associate Professor in PAFA's Certificate Program and also teaches at the New York Academy of Art. He has a BFA from the Philadelphia College of Art and an MFA from the City University of New York. After studying drawing at Studio Simi in Florence, he apprenticed at the Henreau Marble Studios in Carrara, and also under Jacomo Manzu.

Frederic Kaplan has a Certificate in Painting and an MFA from PAFA, and studied at the University of the Arts. He teaches extensively in the tri-state region and his paintings have been exhibited in several one-person and group exhibitions.

Michael Kowbuz has an MFA from PAFA and an MA from Northern Michigan University. He makes paintings, drawings and prints, and has exhibited widely including Cerulean Arts Gallery and Studio in Philadelphia.

Phyllis Gellmin Laver has an MA from the University of the Arts and a BS from Penn State University. She is an Adjunct Professor at Philadelphia University, and exhibits in the Philadelphia region and beyond. Her work focuses primarily on the human figure in large-scale drawings and paintings.

Gilbert Lewis has a Masters degree in Creative Art and Therapy from Hahnemann University, a BFA from the University of the Arts, and a Certificate in Painting from PAFA. He possesses a deep respect and love for painting and the primacy of color, and has an extensive knowledge of materials and techniques.

Joshua Marsh has a BFA from Washington University in St. Louis and an MFA in painting from Yale University, and teaches in the PAFA Certificate/BFA Program. His paintings and drawings of objects are playful investigations of color, space, light, and description. He is represented by Jeff Bailey Gallery, New York.



Douglas Martenson teaches in the Certificate/BFA program at PAFA and at the University of Pennsylvania. He has exhibited his work widely and received numerous awards including a Pennsylvania Council on the Arts Fellowship. He is represented by Gross-McCleaf Gallery in Philadelphia and Sherry French Gallery in New York.

Kyoko Miyabe, PhD received a BA from Brown University, an MA from New York University and an MA from University of York, England. Her doctorate thesis from the University of Cambridge, England, examined the relationship between the writings of Henry James and the paintings of John Singer Sargent. Throughout her studies in literature, she trained in drawing and painting. She is an active painter and maintains a private studio.

Michael Moore holds a BFA degree in Printmaking from Syracuse University and an MFA degree in Drawing from the University of Washington. He taught in Scotland, 1972/73, traveled to China and Japan, and taught at the University of Southern Maine before coming to PAFA in 1992 where he is a member of the Graduate Faculty, and Chairs the Post-Baccalaureate Program. He has exhibited his work in many solo, group, and faculty exhibitions during the past 40 years.

Charles Muldowney is a painter, printmaker and published author and illustrator, set designer for community theater and mural artist. He has an MFA from PAFA, a BFA in painting from University of the Arts and studied at the Barnes Foundation. A widely exhibited artist, he was Associate Professor of Fine Art and Comparative Religion at the Valley Forge Military Academy and College for 25 years.

Erin Murray is a painter with a BFA from Maryland Institute College of Art. She has exhibited extensively in the Philadelphia area, and is looking forward to a solo show at the Delaware Center for the Contemporary Arts. Her work in painting and drawing primarily takes the built environment as its subject.

Steve Nocella is an Assistant Professor in the Sculpture Department at PAFA. He has a BFA from the Philadelphia College of Art and an MFA from the University of Pennsylvania.

Colleen O'Donnell is a graduate of the PAFA Certificate and MFA programs and has studied at the National Academy of Design and the Art Students League. Extensively experienced in sculpture processes, she does her own enlarging, mold-making and casting. Her sculptures are rooted in the context of the human figure.

Michelle Oosterbaan is a painter and installation artist who has exhibited work nationally and internationally at venues that include The Drawing Center and the Morris Gallery at PAFA. In 2008 she was awarded The Great Rivers Biennial Grant at the Contemporary Art Museum Saint Louis. She is an extensive traveler as a fellow in residence to Paris, Berlin, Amsterdam, and Akureyri, Iceland.

Carolyn Pyfrom teaches life drawing and painting in the PAFA Certificate/BFA Program. She received a diploma from the Florence Academy of Art and a BA from Troy State University in Alabama, and has received many awards including the Elizabeth Greenshields Foundation Grant and the American Society of Classical Realism Scholarship.

Celia Reisman is a painter and printmaker whose work describes the residential landscape by combining abstract structures with a rich, complex world of invented color and shape. She has taught at Swarthmore College and Dartmouth College, and has had solo exhibitions in Philadelphia, New York and London. Recently selected for the American Academy of Arts and Letters Invitational Exhibition in New York, she is represented by Gross McCleaf Gallery in Philadelphia and Ruth Morpeth Gallery in Rhode Island.

Tony Rosati is a Professor and Chair of the Printmaking Department at PAFA. He has a BA from Rider College and an MFA from Tyler School of Art. His work is represented in numerous public museum collections including the National Gallery of Art.

Jill A. Rupinski is an Assistant Professor at PAFA, where she teaches drawing, painting and color. She has a Certificate from PAFA and a BFA from the Philadelphia College of Art.

Hiro Sakaguchi is a painter, sculptor and mixed media artist originally from Japan. He received an MFA from PAFA and a BFA from the University of the Arts. His work has been the subject of numerous national and international solo and group exhibitions, most recently a PAFA Morris Gallery Exhibition, *Hiro Sakaguchi: No Particular Place to Go* in 2011.

Clarissa Shanahan Schirmer received a BFA from the University of Pennsylvania and attended PAFA, the New York Academy of Art, and the Isabel O'Neil Studio for the Art of the Painted Finish, New York. She has worked as a decorative artist for both private and commercial clients including American Express, Oscar de la Renta, and Saks Fifth Avenue.

Joseph Sweeney is a nationally recognized plein-air landscape painter. Widely exhibited, he has received critical acclaim and twice made the cover of *American Artist* magazine. His work is included in numerous private and corporate collections across the country and in Europe. He is represented by Gross-McCleaf Gallery in Philadelphia.

Allison Syvertsen received a BA from Houghton College in New York and an MA and MFA from the University of Wisconsin at Madison. She makes drawings and paintings that focus on the landscape as a means to investigate time passage and memory.

James Toogood is an award-winning watercolor artist, author and teacher with more than 40 solo exhibitions both in the U.S. and abroad. He is the author of the book, *Incredible Light and Texture in Watercolor*.

Peter van Dyck studied at the Florence Academy of Art and Wesleyan University, and teaches drawing and painting in the PAFA Certificate/BFA Program. He is represented by John Pence Gallery in San Francisco and Eleanor Ettinger Gallery in New York.

Robert Waddington is a realist painter with an MFA from the University of Pennsylvania and a BFA from the School of Visual Arts in New York. Steeped in the traditions of the Renaissance, he teaches painting, papermaking, book arts, and fresco. He is represented by Rodger LaPelle Galleries in Philadelphia.

David Wilson holds an MFA from PAFA and a BFA from Syracuse University. His award-winning work has been exhibited nationally and is included in numerous private and public collections. He is represented by Rodger LaPelle Galleries in Philadelphia.

Ronald Wyffels is an Associate Professor at PAFA where he teaches lithography and drawing. He received a BFA from the State University College at Buffalo and an MFA from Montana State University. He is also the founder of the Stone Roller Lithography Studio in Chicago.

Theodore Xaras has an MFA from Tyler School of Art and a BFA from the Philadelphia College of Art, and was a Professor and Chair of the Art Department at Ursinus College for many years. He has executed numerous public and private portrait commissions and has an extensive knowledge of art history from the point of view of the practicing artist.

CONTINUING EDUCATION PROGRAMS

128 North Broad Street
Philadelphia PA 19102

t 215-972-7632

f 215-569-0153

e continuinged@pafa.edu

pafa.edu/CE

Non-Profit Org
U.S. Postage
PAID
Philadelphia, PA
Permit No. 2879

IMPORTANT: DATED MATERIAL - DELIVER IMMEDIATELY

ADDRESS UPDATE:

- Please change my address as indicated.
- Please remove my name from the mailing list.
- I am receiving duplicates.

Please enclose the address to the right.



PENNSYLVANIA ACADEMY
OF THE FINE ARTS